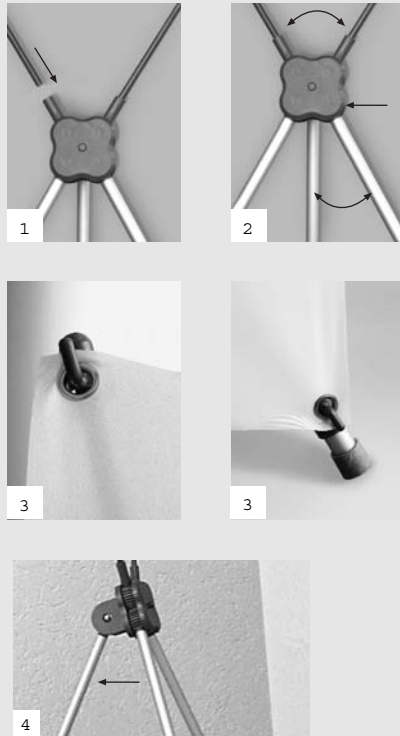


X-Display Construction Sheet

X-Display 100

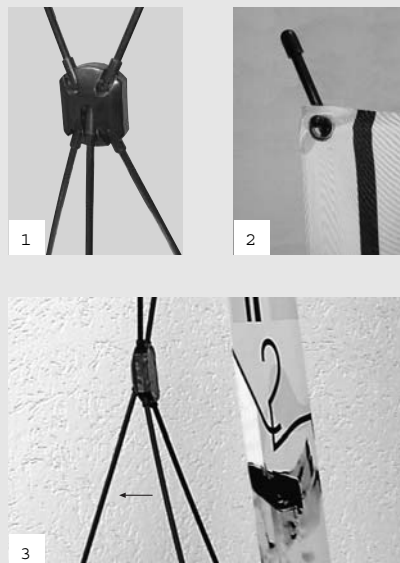
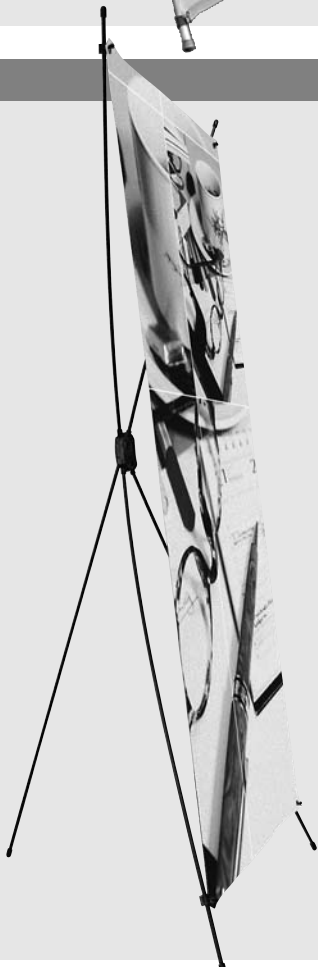


- 1 Fit the plastic rods into the sleeves of the plastic connector
- 2 Press the button in the center of the connector to unfold the rods to the width of the display
- 3 Fix the eyeletted corners of the image under tension to the hooks at the rod ends
- 4 Put the display up, folding back the center aluminium rod to a position that suits best
- 5 Check stability



- Scope of delivery:
- Image
 - 3 aluminium rods joined by a connector
 - 2 fibreglass reinforced plastic rods
 - Carrying case

X-Display 200



- 1 Unfold the fiberglass reinforced plastic rods
- 2 Fix the eyeletted corners of the image under tension to the hooks at the rod ends
- 3 Put the display up, folding back the center rod to a position that suits best
- 4 Check stability



- Scope of delivery:
- Image
 - 5 fibreglass reinforced plastic rods joined by a plastic connector
 - Economy bag