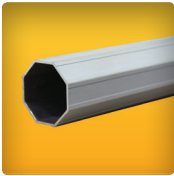


EVENT TENT PREMIUM

Technical Specifications | R1.012617



PRODUCT USAGE

This product is recommended for use indoors or outdoors.



DESCRIPTION

- Strongest Advertising Tent with an octagonal commercial-grade aluminum support structure
- Available in 13' x 13', 13' x 20' and 13' x 26'
- Canopy attaches to frame with hook-and-loop adhesive - fast and easy to remove or change
- Add up to four walls, including half walls, full walls and walls with windows and/or doors
- Wall finishes include hook-and-loop tabs and optional zippers
- Extra strong tent legs with 2.0" diameter, wall thickness: 0.06"
- Printed on Suntex 6oz FR, a rainproof and UV-resistant material – also available with optional coating for better protection against scratches and UV light

AVAILABLE SIZES

MODEL	PART NO.	WEIGHT	DISPLAY SIZE
13.0' x 13.0'	#H_TS24040	89.0lb	13.0' x 12.8' - 13.8' x 13.0'
13.0' x 20.0'	#H_TS24060	118.0lb	13.0' x 12.8' - 13.8' x 20.0'
13.0' x 26.0'	#H_TS24080	157.0lb	13.0' x 12.8' - 13.8' x 26.0'

CANOPY PRINT OPTIONS

Canopy with Full Imprint (top and valances)
Canopy with Area Imprint (top and valances)
Canopy with Valance Imprint
Canopy no Imprint (White)

FINISHING

MATERIAL Suntex 6oz FR

WALL OPTIONS Full-Color Imprint or without Imprint (White)

WALL TYPE	13.0' x 13.0'	13.0' x 20.0'	13.0' x 26.0'
Half Wall	13.0' x 3.0'	13.0' x 3.0'	13.0' x 3.0'
Full Wall	13.0' x 7.3'	13.0'/20.0' x 7.3'	13.0'/26.0' x 7.3'

Windows (round or rectangular) and doors available

FINISHING

LAYOUT	Single-sided	Double-sided
MATERIAL	Suntex 6oz FR	
FINISH	Hook-and-loop straps on both sides to attach to tent legs Straps and a zipper on both sides to connect walls	

ACCESSORIES



Event Tent Stake Kit
#H_TS00001



Event Tent Stake
Kit Premium
12" - #H_TS_050
16" - #H_TS_051



Sand Bag Weight
Sm - #H_TS00006
Lg - #H_TS00008



Half Wall Support Bar 13'
#H_TS00013



Steel Weight Plate
22lb - #H_TS00025
44lb - #H_TS00026



Travel Case w/ Wheels for
13'/20' & 26'
Event Tent Premium
#H_TS00180/#H_TS00190