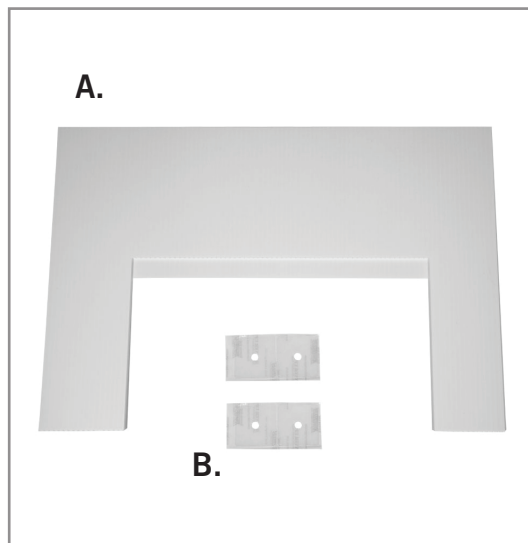


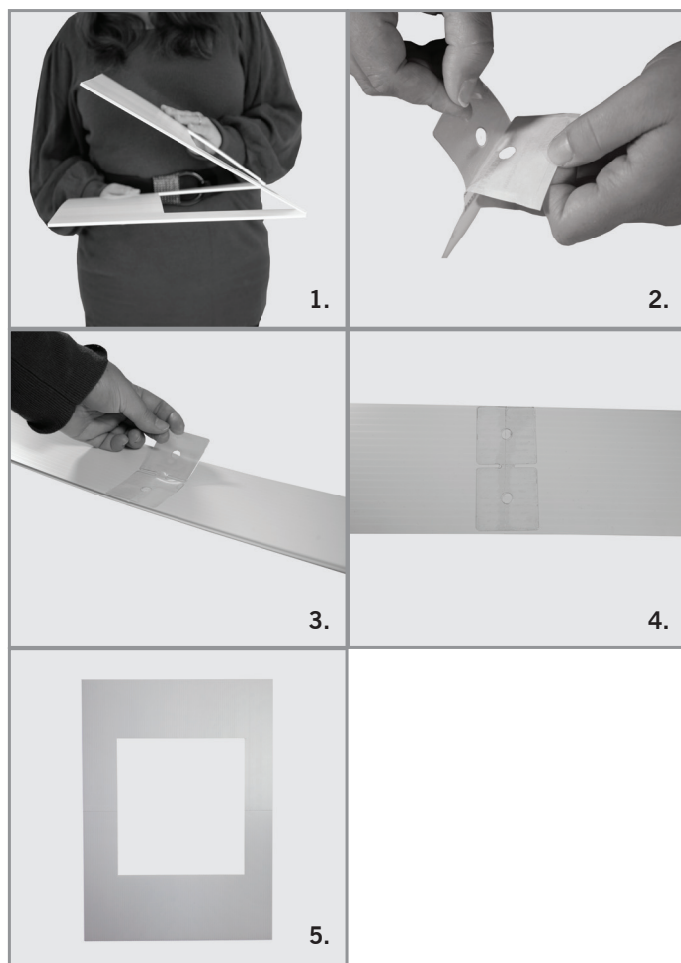
ASSEMBLY HARDWARE



A. Custom Selfie Frame
B. Adhesive Tab



ASSEMBLY



1. Unfold the selfie frame and place the printed side down.
2. Remove the protective film from the one side of the adhesive tab.
3. Line the adhesive tab up with the cut section of the key. The adhesive tab should cover the line completely.
4. Push the tab firmly to the key.
5. Your custom selfie frame is now ready to use!