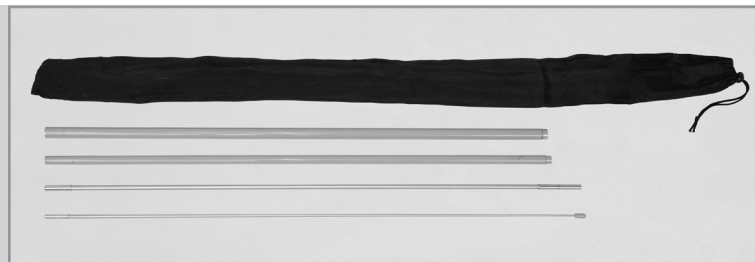
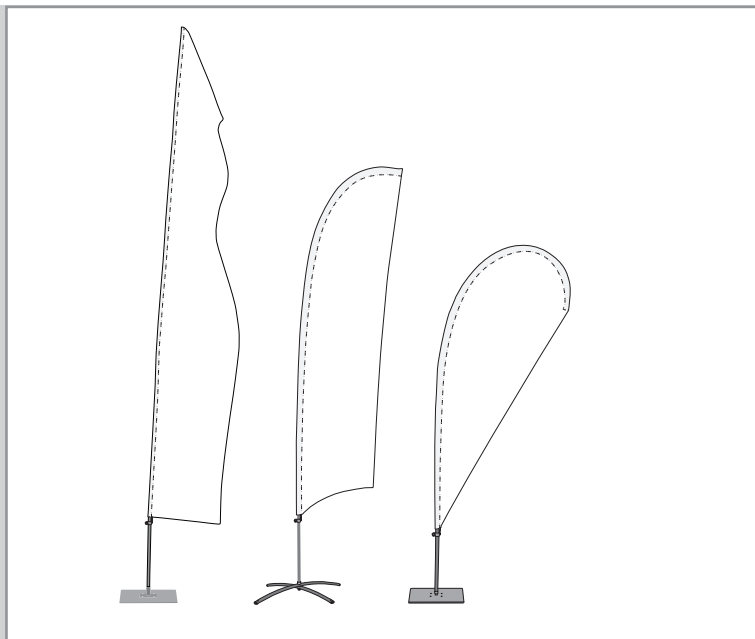


Feather Flag with Clamp

R2.11/18/2025

ASSEMBLY HARDWARE



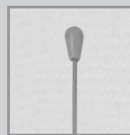
NOTE - THE AMOUNT OF POLES ARE DETERMINED BY THE SIZE OF THE FEATHER FLAG

Wind Speed Recommendations:

- Standard Single-Reverse: 25-30mph
- Standard Double-Sided: 13-17mph

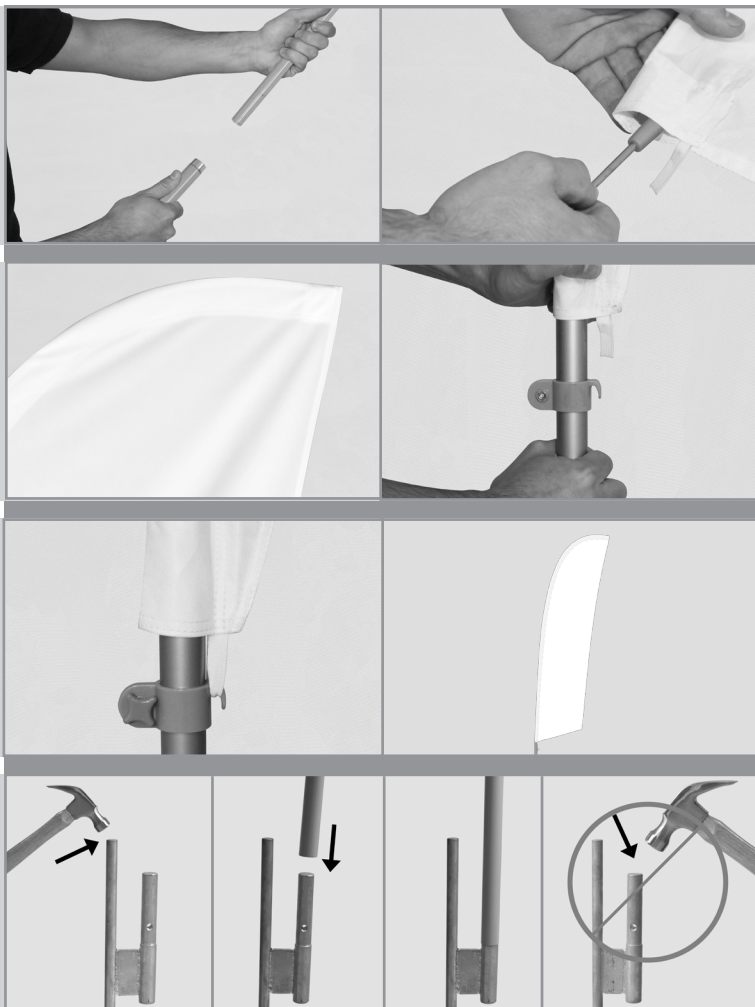


Clamp



Tip

ASSEMBLY



1. Assemble the pole set. Attach the poles together with the smallest-diameter pole at the top and the largest-diameter pole at the bottom.

2. Insert the assembled pole set into the print pole sleeve.

3. The flexible fiberglass pole will curve to the shape when the flag is fully taut. Pull the print and the pole sleeve downwards towards the clamp located on the bottom pole. (Make sure the tip of the pole is fully inserted into the reinforced pole pocket on the print.)

4. Pull print taut and attach tab to the clamp.

5. Tighten the clamp at a location where the print will be fully taut. (Clamps are specific to the size of product).

6. Your feather flag is ready to be used.

Ground Stake Assembly

1. To use the ground stake base, use a hammer to push the taller end of the stake base into the soil. Do not use a hammer on the shorter portion of the stake base damage to the base may occur.

2. Install the pole set by seating it on the smaller end of the stake base.



Scan this code for an assembly video!



Do not fly this product in wind gusts exceeding what is listed below and/or thunderstorms. Standard pole sets with single-reverse flag: up to 30mph. Standard pole sets with double-sided flag: up to 17mph. Do not use near overhead wires and allow a 4'-12' radius from base for flag clearance depending on size. User must read and observe assembly instructions. If this is not done correctly it may result in damage to the unit, injury, or death, and all warranties will be void. All warranties will be void if this product is used with any flag or hardware not produced by us.

