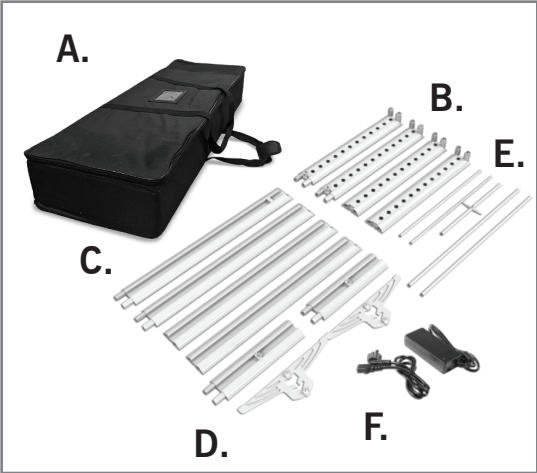
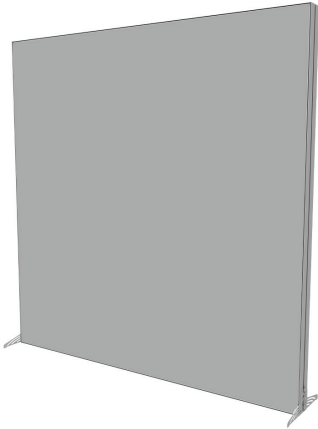


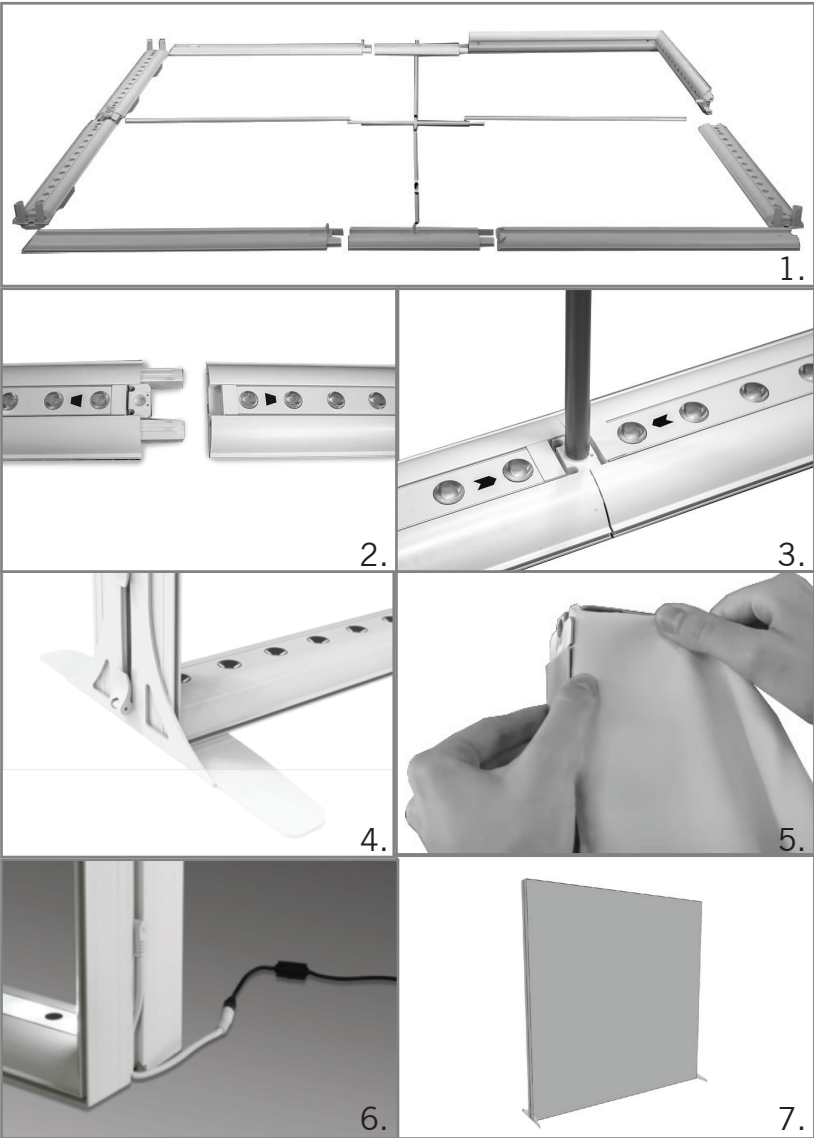
ASSEMBLY HARDWARE



- A. PADDED CARRYING CASE
- B. LED TOP AND BOTTOM FRAME
- C. SIDE FRAME
- D. FEET
- E. MIDDLE SUPPORT POLE
- F. POWER CORD



FRAME ASSEMBLY AND PRINT ATTACHMENT

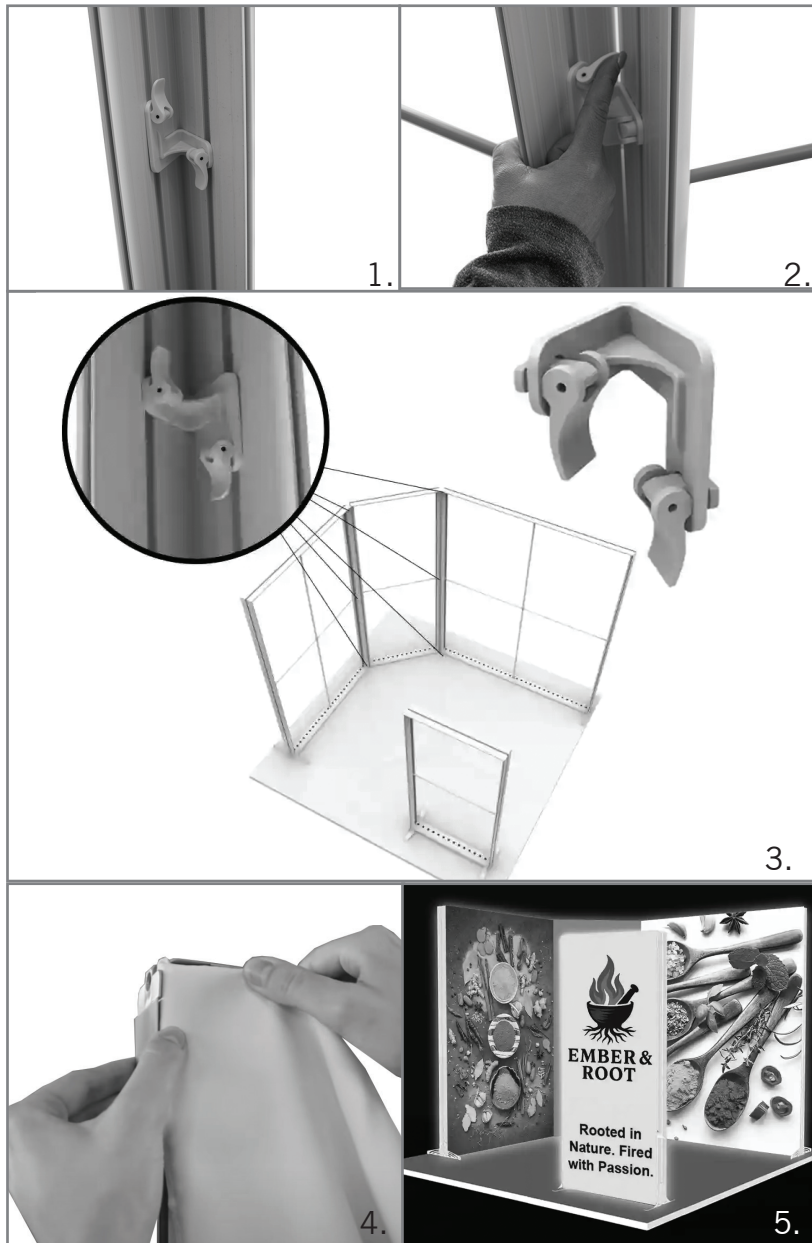


NOTE: ADDITIONAL PEOPLE MAY BE REQUIRED FOR LARGER DISPLAYS

ASSEMBLY

1. Take each item out of the carrying case and lay them on the floor.
2. Connect the frame by the guided shapes on the hardware.
3. Once the frame is together, add the support pole to the middle of the frame.
4. Clip the feet into place for stability.
5. Start in the corner of the frame and work the print into the hardware.
6. Plug the power cord into the outlet and frame.
7. Your modular lightbox is ready to use!

FRAME ASSEMBLY AND PRINT ATTACHMENT



ASSEMBLY

1. Set up the 3' frame next to the 6.5' frame. Line the 45° connector up with the grooves on each frame.
2. Once the connector is in position, push the tabs down to lock the connector into place.
3. Repeat those two steps 5 more times. There should be three connectors connecting the 3' frame to the 6.5' frame and three connectors connecting the other side of the 3' frame to the 5' frame.
4. Add the print to the frames. Start in the corner of the frame and work the print into the hardware.
5. Your Aventura kit is now ready to use!