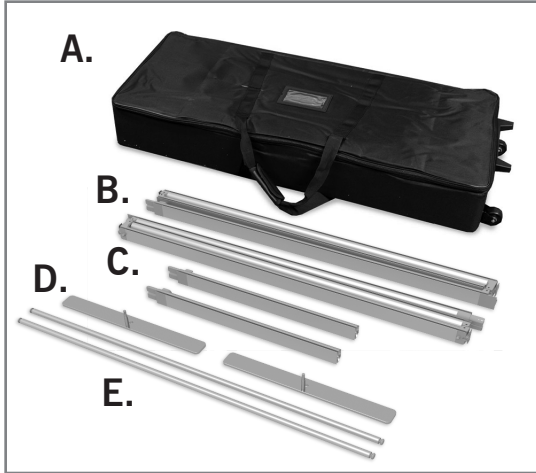
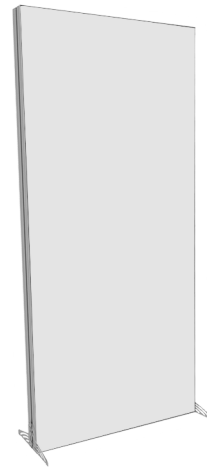


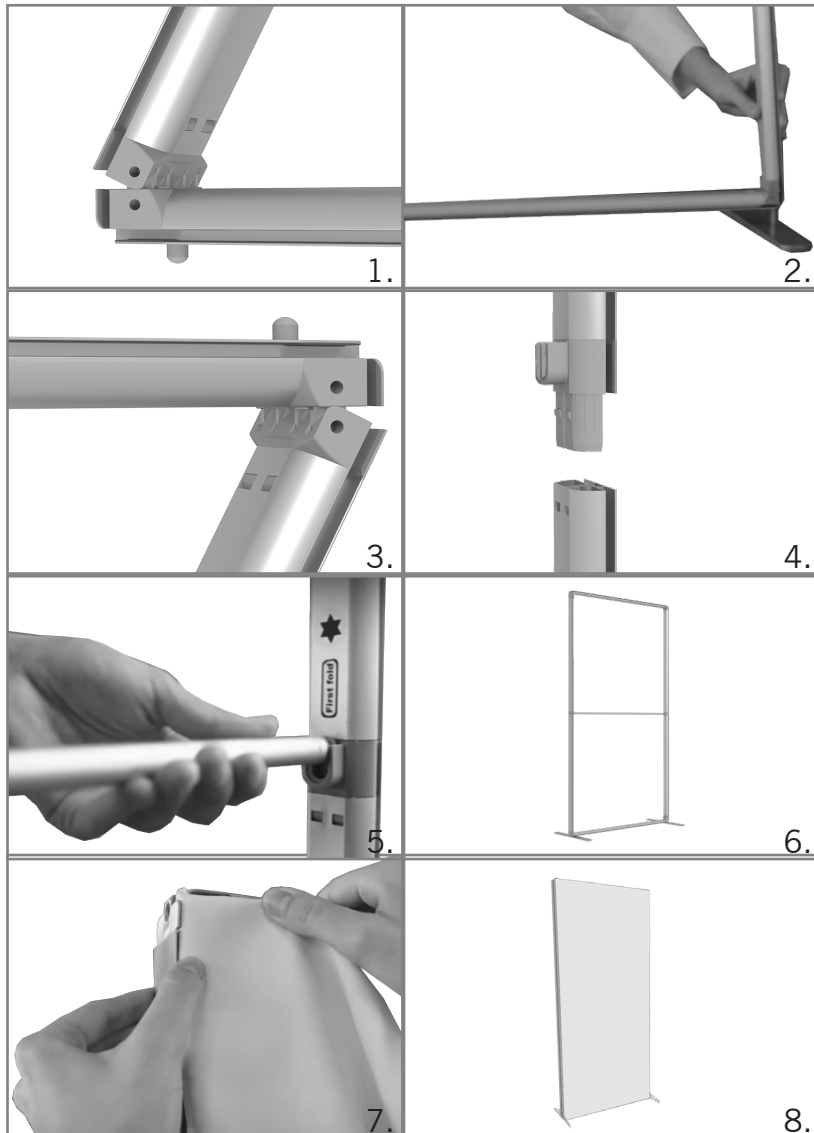
ASSEMBLY HARDWARE



- A. PADDED CARRYING CASE
- B. SEG FRAME
- C. MIDDLE FRAME BAR
- D. FEET
- E. MIDDLE SUPPORT POLE



FRAME ASSEMBLY AND PRINT ATTACHMENT

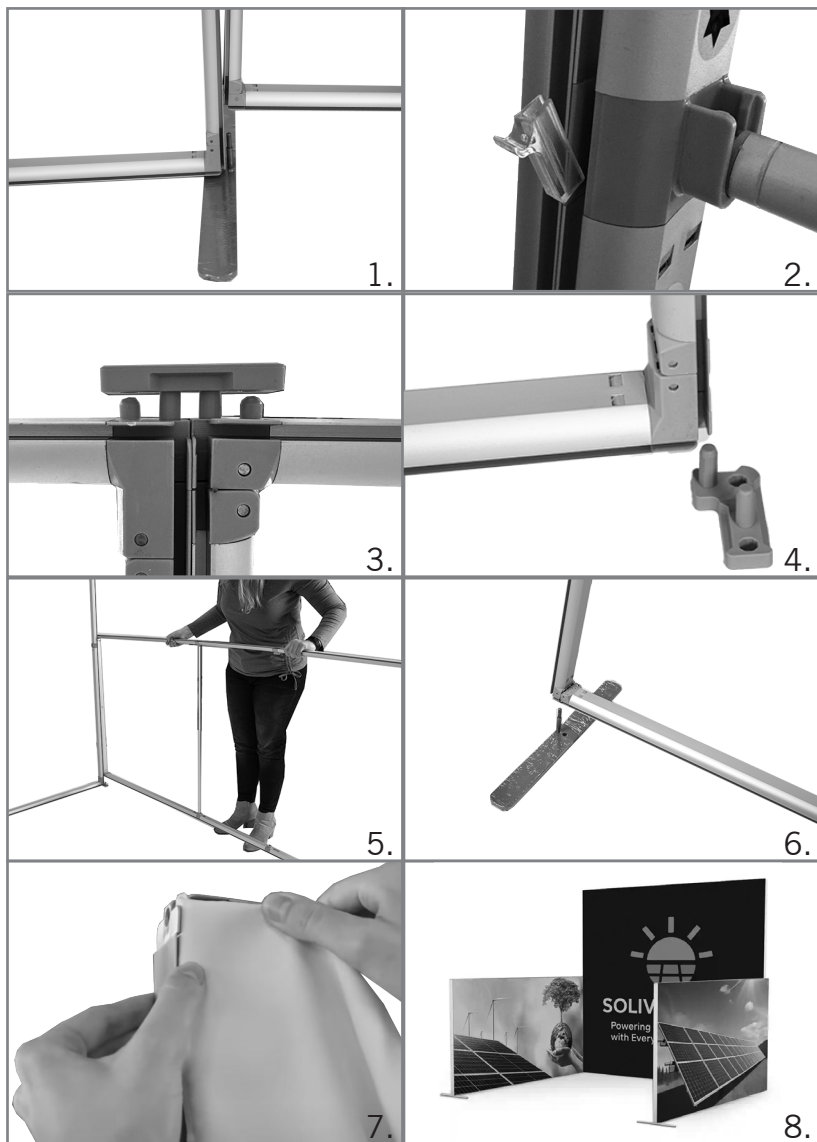


NOTE: ADDITIONAL PEOPLE MAY BE REQUIRED FOR LARGER DISPLAYS

ASSEMBLY

1. Pull the frame out of the carrying case and lay each piece out. Then take one of the frame pieces and open it up.
2. Line the holes on the bottom of the frame up with the feet and push down.
3. Next take the other closed frame and open it up.
4. Add the middle frame bar (you don't need to add this piece if you are buying the 3' wide x 6' high frame) to the bottom frame and then place the top of the frame on the middle frame bar.
5. Once the frame is completely together, install the middle support pole.
6. The frame will then be together. For larger frames, the support pole will come with a middle T section to connect all the middle poles.
7. Install the print by inserting the silicone edging into the grooves of the frame.
8. Your Modular SEG Display is ready to use!

FRAME ASSEMBLY AND PRINT ATTACHMENT



NOTE: ADDITIONAL PEOPLE MAKE IT EASIER TO PUT TOGETHER. YOU WILL ALSO NEED A STEP STOOL.

ASSEMBLY

1. When connecting the two 4ft walls together, you will use the special 180° foot with two pins on it. Securely set each frame on each pin.
2. Use the clear 180° connector on the back of the two frames (if there is no print being used on the back)
3. Take the plastic 180° connector for the top of the frame.
4. To connect the vertical frame and horizontal frame, use the 90° connector at the bottom of each frame.
5. Place the vertical frame on the connector first, then place the horizontal frame on second.
6. On the opposite end of the horizontal frame line the hole on the bottom with the foot and push down.
7. Install the print by inserting the silicone edging into the grooves of the frame.
8. Your tradeshow kit is ready to use!