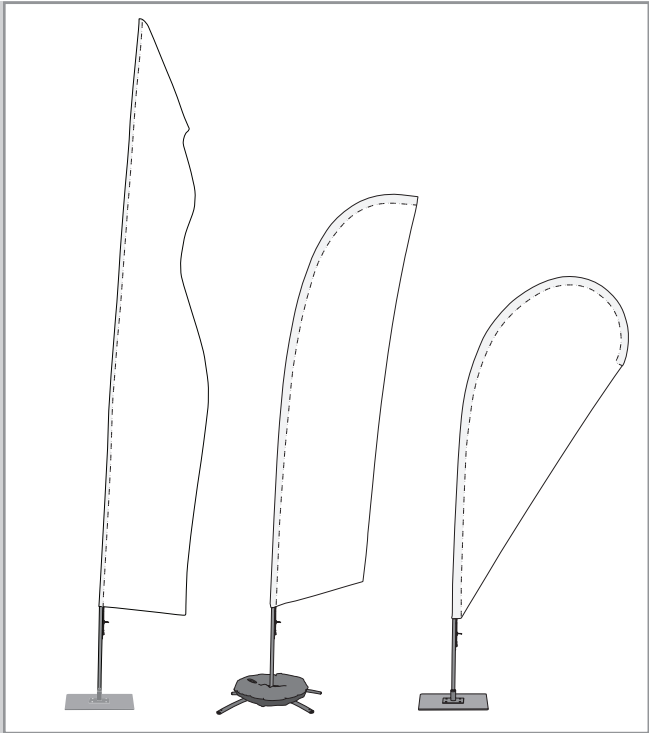


# Feather Flag Premium with Clamp

Assembly Instructions | R1.031022

## ASSEMBLY HARDWARE



Size	Pole 1	Pole 2	Pole 3	Pole 4	Pole 5	Total Poles
M	X	X	X		X	4
L	X	X	X	X	X	5
XL	X	X	X	XX	X	6

NOTE - THE AMOUNT OF POLES ARE DETERMINED BY THE SIZE OF THE FEATHER FLAG

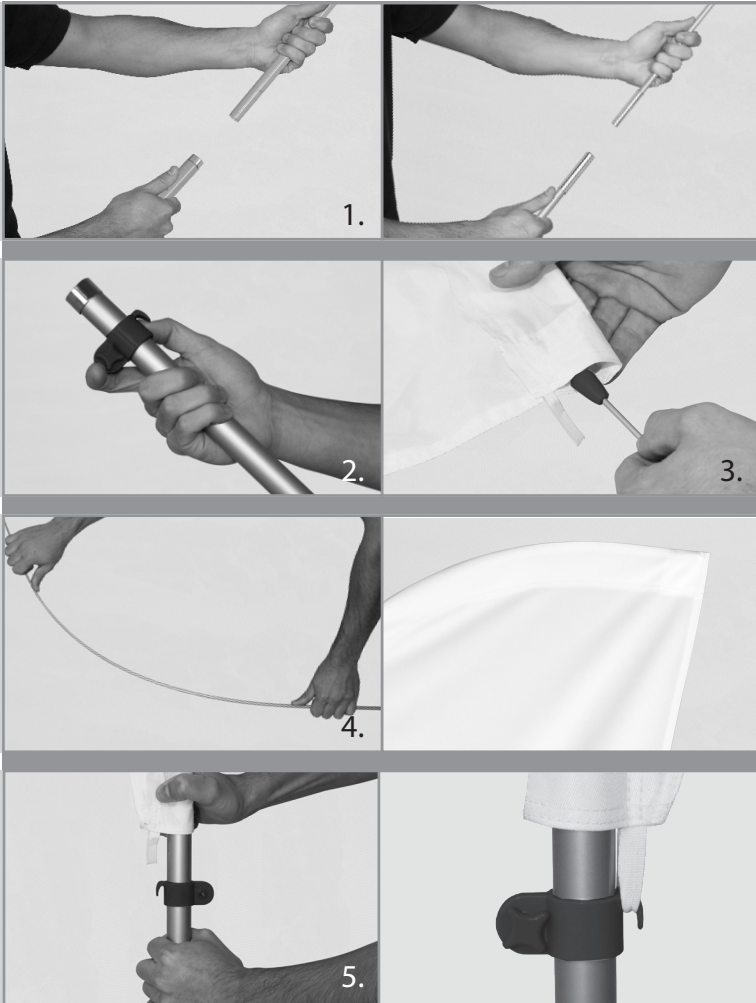


Clamp

Tip

Wind Speed Recommendations:  
• Feather Flag Premium Single-Reverse: 55-63mph  
• Feather Flag Premium Double-Sided: 39-46mph

## ASSEMBLY



1. Assemble the pole set. The poles will be assembled from the largest diameter pole on the bottom to the smallest diameter pole. Pole number 2 goes between pole 1 and pole 3.

2. Clamp on the bottom pole is adjustable. Once you attach the flag, you can move the clamp so the flag is taut (clamps are specific to the size of product).

3. Insert the assembled pole set into the print pole sleeve.

4. The flexible fiberglass pole will curve to the shape when the flag is fully taut. When inserting the pole into the flag, make sure the tip of the pole is fully inserted into the reinforced pole pocket at the end of the flag.

5. Pull the pole sleeve of the flag downwards towards the clamp located on the bottom of the pole. Attach the loop located at the bottom of the flag to the clamp hook. Tighten the clamp at the location where the print will be fully taut.



Scan this code for an assembly video!

Do not fly this product in wind gusts exceeding what is listed below and/or thunderstorms. Feather Flag Premium with single-reverse flag: up to 63mph. Feather Flag Premium with double-sided flag: up to 46mph. Do not use near overhead wires and allow a 4'-12' radius from base for flag clearance depending on size. User must read and observe assembly instructions. If this is not done correctly it may result in damage to the unit, injury, or death, and all warranties will be void. All warranties will be void if this product is used with any flag or hardware not produced by us.

