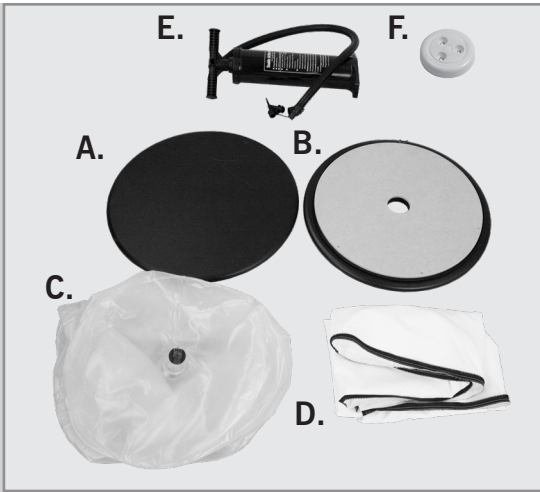


# AIR TABLE

Assembly Instructions | R1.050119

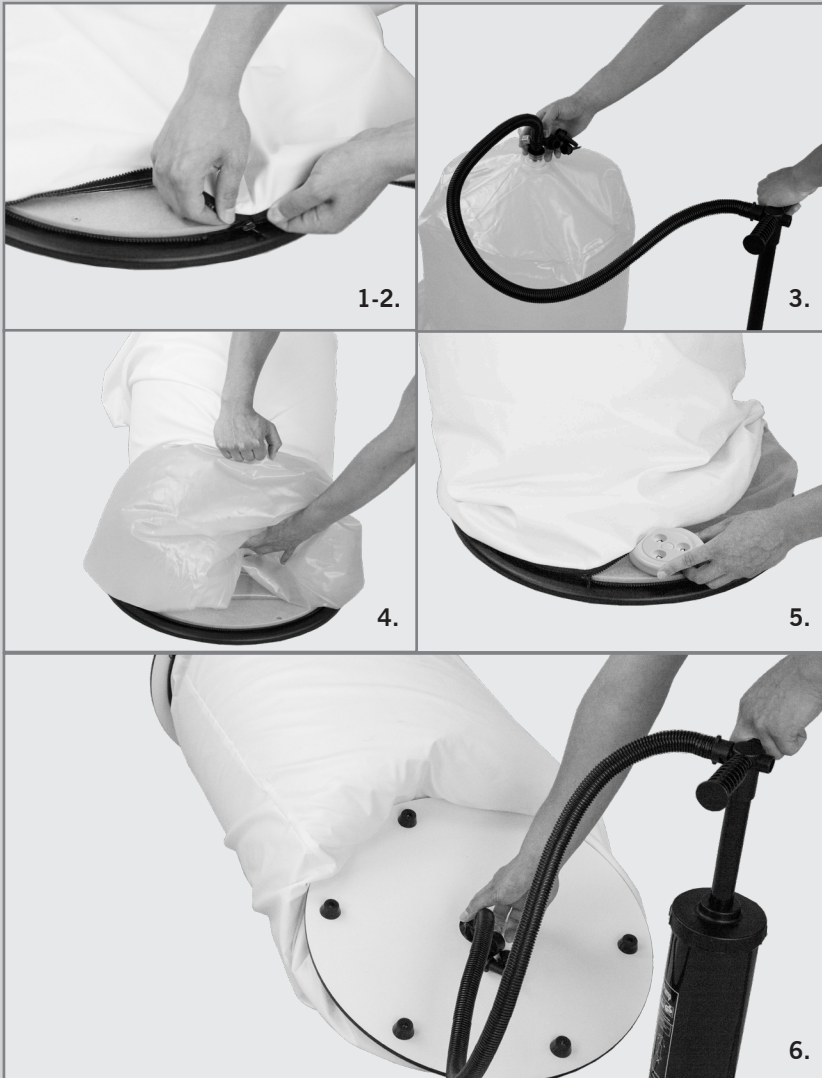
## ASSEMBLY HARDWARE



- A. Black MDF tabletop
- B. Black MDF base with feet
- C. Inflatable insert
- D. Print
- E. Manual air pump (optional)
- F. Battery-operated LED push lights (backlit only)



## ASSEMBLY

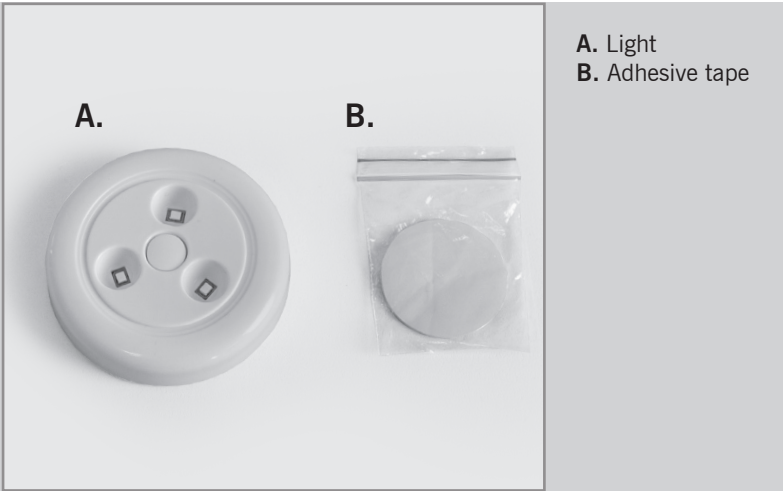


1. Place base and tabletop on the ground with the zippered sections facing up.
2. Attach the print to the tabletop by zippering the two together. (Make sure the top of the print is facing toward the tabletop.)
3. Open only the black valve on the inflatable insert, not the entire valve. Insert the air hose valve into the black valve. Pump up the insert until it's 3/4 full.
4. Close the valve and place the insert into the print with the valve facing toward the open section.
5. Attach the base and the print by zippering them together. For the backlit version, place a light between the insert and the base. (24" model gets 1 light at the bottom; 40" model gets 1 light at top and 1 at bottom. See second page to attach the light to the base). When this is done, zip both ends shut.
6. Lay the table on its side. Open the black valve and insert the air hose valve. Pump until entirely full. Be careful not to over-inflate.

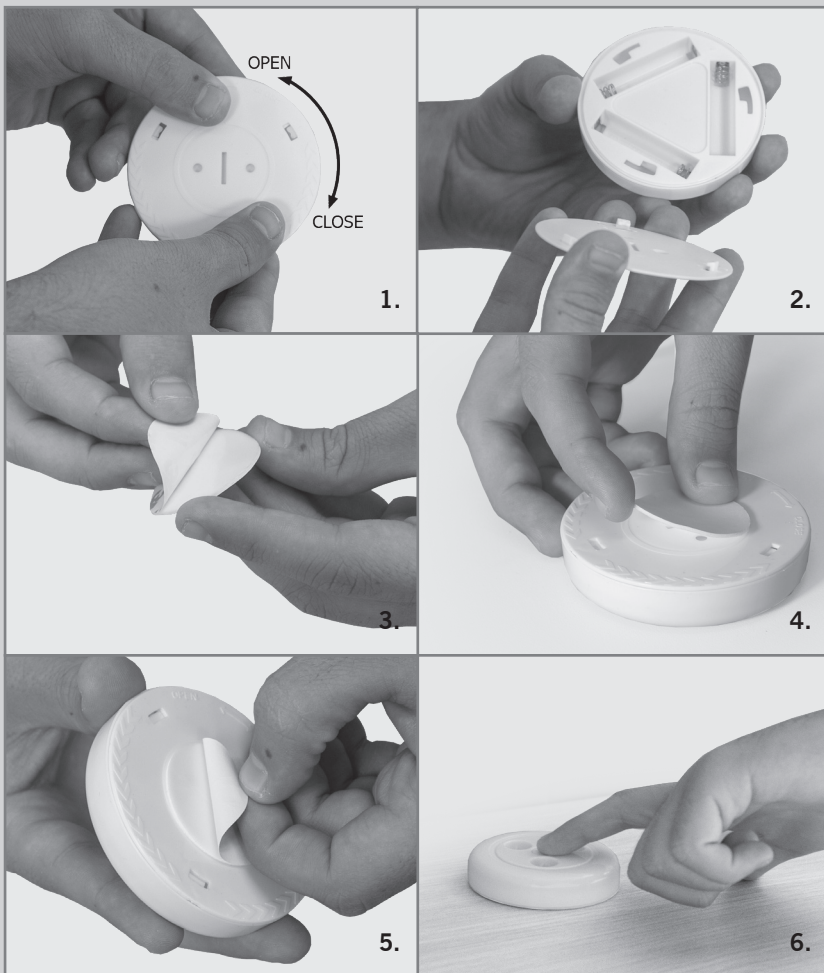
# LED LIGHT

Assembly Instructions | R1.050119

## ASSEMBLY HARDWARE



## ASSEMBLY



1. Twist the bottom of the light to open the battery section.
2. Insert three triple-A batteries into the inserts. (Batteries are not included.)
3. To add the adhesive bottom, peel the film of sticky strip off.
4. Place adhesive strip on the bottom.
5. Peel off the film backing.
6. Position the light onto the base and press firmly to ensure the light is secured.