

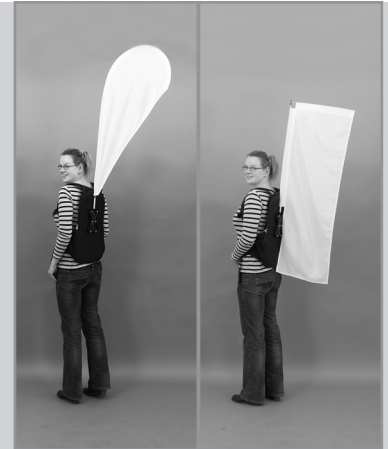
# Backpack Walking

R1.032012

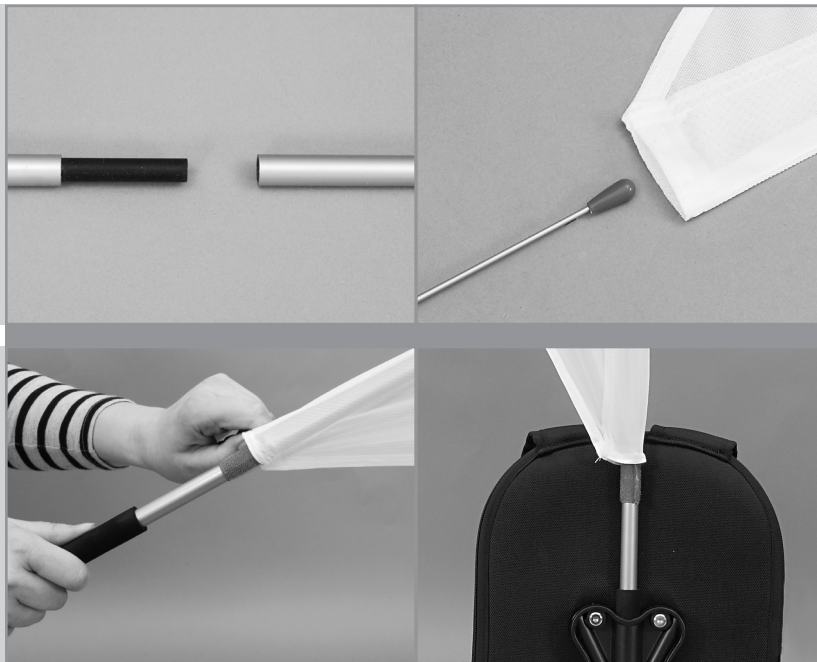
## BACKPACK WALKING BOWFLAG® & FLAG ASSEMBLY HARDWARE



A. Backpack with Mount  
B. Print  
C1&2. Fiberglass Poles  
D1&2. Aluminum Poles



## BACKPACK WALKING BOWFLAG® ASSEMBLY



1. Slide all four poles (C1&2,D1&2) together until snug. If poles are not fitting, try using the opposite side of the pole or changing the order of the poles. (There is only one correct order for each pole segment).

2. Mount Print (B) by inserting the tip of the Fiberglass Pole (C1) into the strengthened end of the sleeve. Slide flag down the poles.

**\*Note: Be certain the tip of the pole is fully inserted into the strengthened end of the sleeve.**

3. Fix the lower end of the print sleeve to the hook-and-loop adhesive on the pole end.

4. Insert the end of the pole into the mount on the front side of the Backpack (A) until snug. Pole may be turned slightly.

## BACKPACK WALKING FLAG ASSEMBLY



1. Slide the Aluminum Poles (D1&2) together until snug. Insert through the vertical pole sleeve of the Print (B). Loosen the screw on the end of the newly joined pole segment.

2. Insert the non-tip end of the Fiberglass Pole (C2) into the opening at the top of the Aluminum Pole (D1) as well as the horizontal pole sleeve of the Print (B). Continue until fully inserted. Tighten the screw which was loosened in Step 1.

3. Fix the lower end of the print sleeve to the hook-and-loop adhesive on the pole end.

4. Insert the end of the pole into the mount on the front side of the Backpack (A) until snug. Pole may be turned slightly.

# Backpack Walking

R1.032012

## BACKPACK WALKING BILLBOARD ASSEMBLY HARDWARE



- A. Backpack with Mount
- B. Print
- C. Support Poles



## BACKPACK WALKING BILLBOARD ASSEMBLY



1. Slide each Support Pole (C) together until snug. If poles are not fitting, try using the opposite side of the pole or changing the order of the poles. (There is only one correct order for each Support Pole).
2. Insert all four of the Support Poles (C) into the mount on the backside of the Backpack (A) until snug. Position the hooks facing towards you.



3. Once all four Support Poles (C) are mounted, locate the grommets at the corners of the Print (B) and attach to the hooks on the Support Poles (C). Mounting print to top hooks first is suggested.